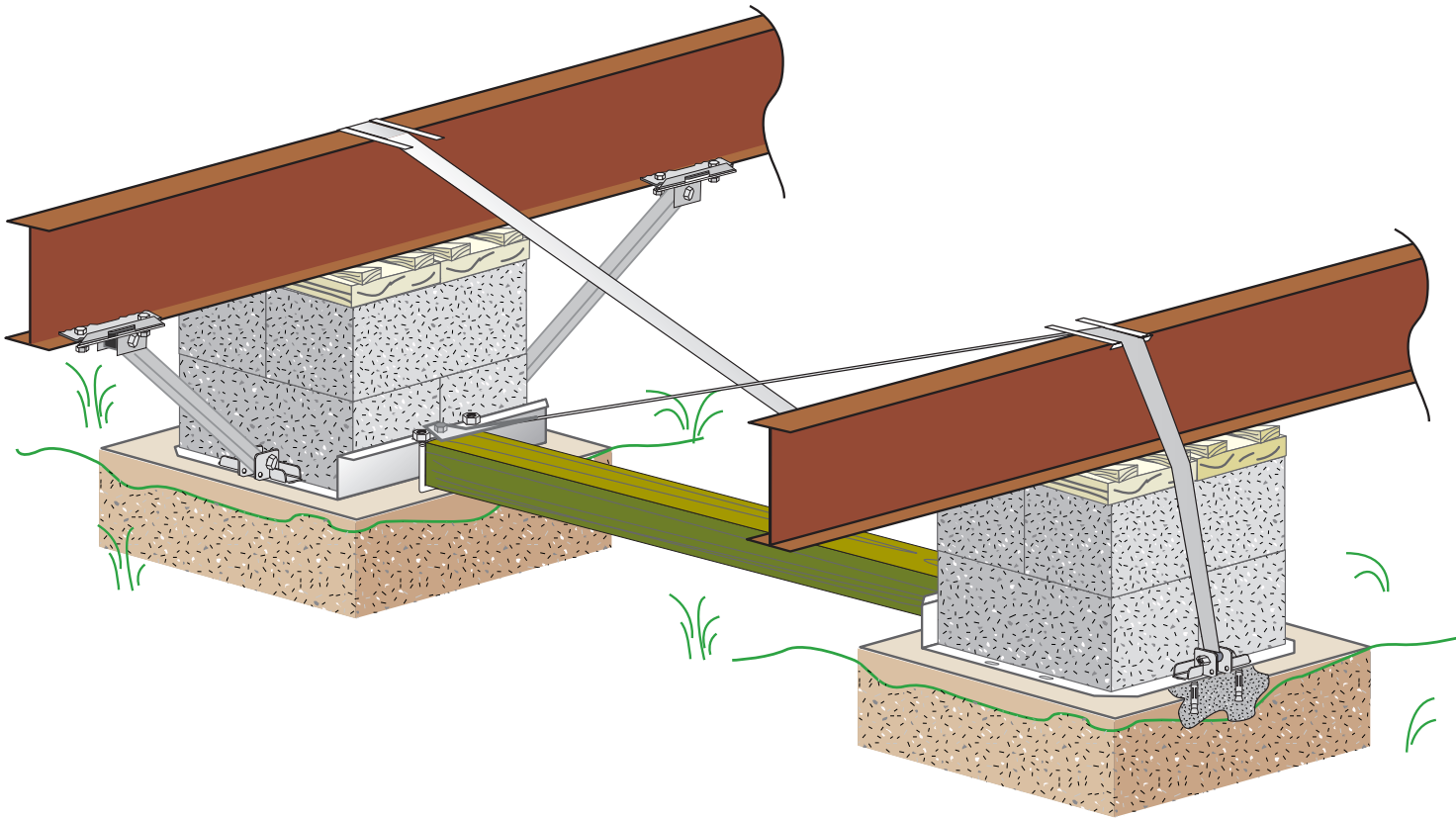


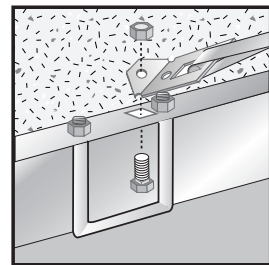
Lateral and Longitudinal Stabilization Combined into One System for Concrete Applications



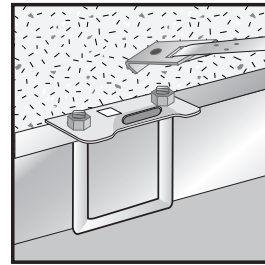
Parts required for the Vector System shown above:

- 1 P/N 59049 - Vector Lateral Concrete (double block stack) with strap & slotted bolts
or
- 1 P/N 59006 - Vector Lateral Concrete (double block stack)
- 1 P/N 59023 - Longitudinal Hardware Kit for 59006 or 59049
- 2 Struts for Longitudinal Systems
- 2 Strap w/ Swivel Connector or Strap Frame Tie Connector
- 2 P/N 59135 - Slotted Bolt

Detailed parts list shown on back



Swivel Strap Connection



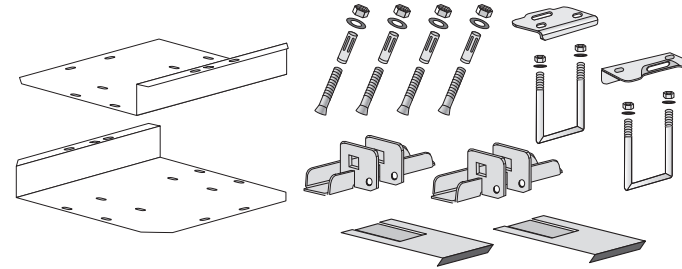
Frame Tie Connection

Compression member available from your dealer or local building supply.

Use one of the following:

- 1 - 4x4 Treated lumber
- 2 - 2x4 Treated lumber
- 1 - ABS/PVC Schedule 40 Pipe
- 1 - Compression Strut #59027

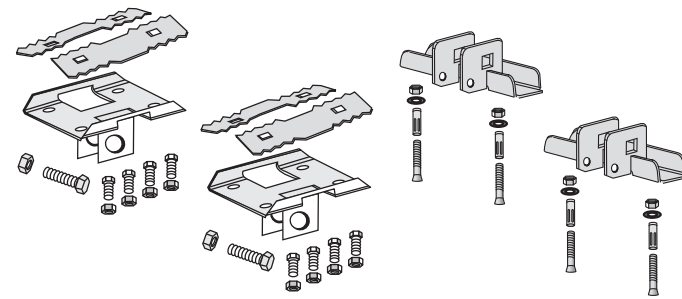
Lateral and Longitudinal Stabilization Combined into One System for Concrete Applications Parts Detail List



Concrete Vector System

Part # 59006
(for double stack blocks)

Part # 59046
Includes #59006 with Straps & Slotted Bolts

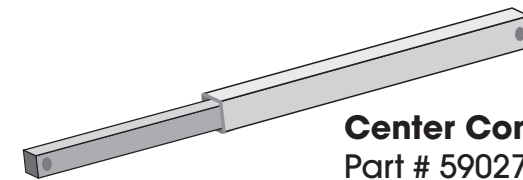
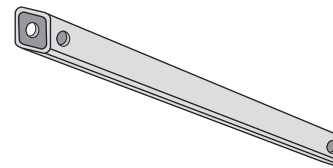


Longitudinal Stabilization Hardware Kit for Concrete

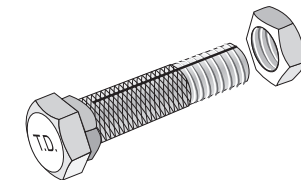
Part # 59023

Struts for Longitudinal Systems

Part No.	Strut Length	Pier Height
59016	30"	up to 2 Blocks
59012	39"	up to 3 Blocks
59013	44"	up to 4 Blocks
59014	53"	up to 5 Blocks
59015	65"	up to 6 Blocks

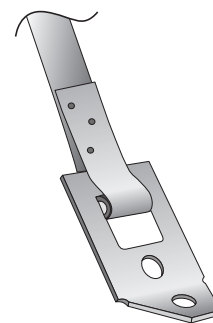


Center Compression Strut
Part # 59027

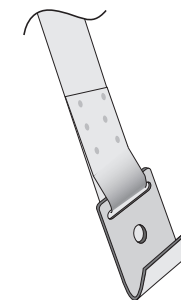


Slotted Bolt
Part # 59135

Recommend Strap: Depending on local or state requirements



Part #	Length
59732	12'
59734	14'
59736	16'



Length	Part #
8 ft.	P/N 59195
10 ft.	P/N 59210
12 ft.	P/N 59211
Longer Lengths Available	