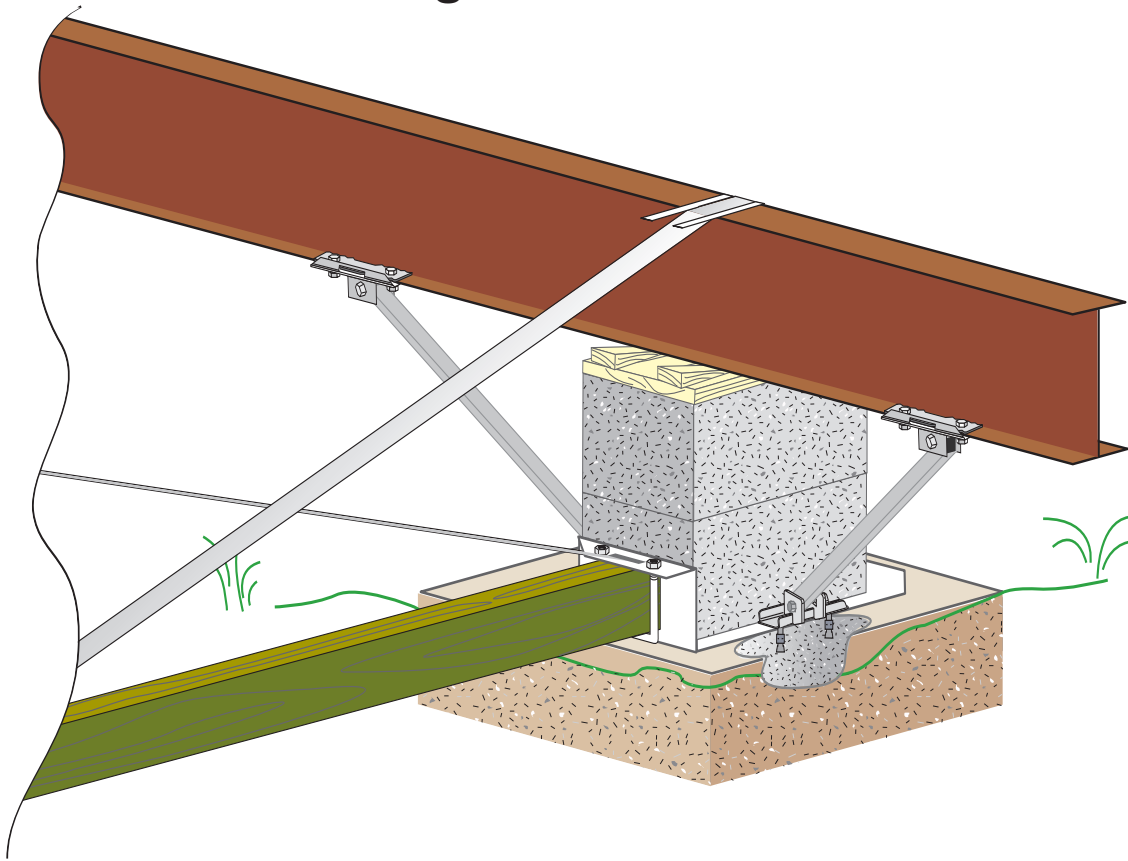


Lateral and Longitudinal Stabilization Combined into One System for Concrete, Slabs & Runners for Single Block Piers



Parts required for the Combined Vector & Longitudinal System shown above:

- 1 P/N 59036 - Vector Lateral Concrete (single block stack) with strap & slotted bolts
or
- 1 P/N 59008 - Vector lateral System Concrete (single block stack) Kit
- 1 P/N 59023 - Longitudinal Concrete Kit (Must be used with P/N 59008/59036)
- 2 P/N 59135 - Slotted Bolts
- 2 Swivel Strap Connectors or Strap Frame Tie Connectors
- 2 Struts for longitudinal System

Detailed parts list shown on back

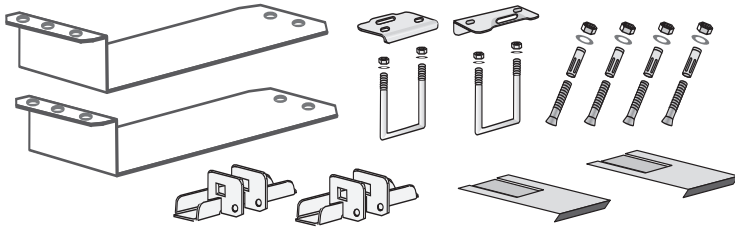
Compression member available from your dealer or local building supply.

Use one of the following:

- | | |
|------------------------------|------------------------|
| 1 - 4x4 Treated lumber | 2 - 2x4 Treated lumber |
| 1 - ABS/PVC Schedule 40 Pipe | 1 - Compression Strut |

Lateral and Longitudinal Stabilization Systems for Concrete, Slabs & Runners for Single Block Piers

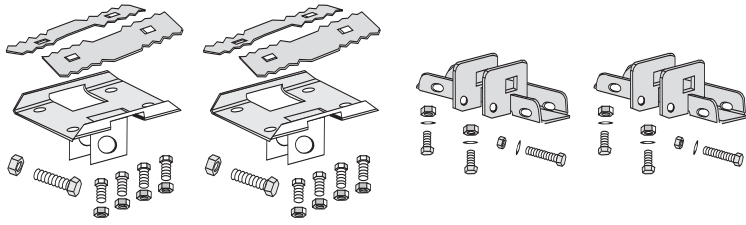
Parts Detail List



Concrete Vector System

Part # 59008

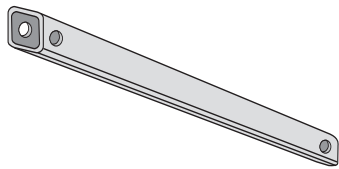
Part # 59036 Includes Straps & Slotted Bolts



Longitudinal Stabilization Kit for concrete

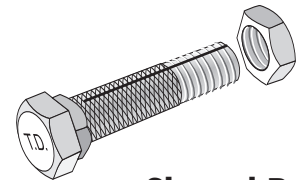
(must be used with #59008)

Part # 59023

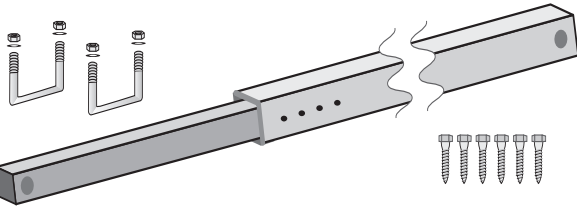


Struts for Longitudinal Systems

Part No.	Strut Length	Pier Height
59016	30"	up to 2 Blocks
59012	39"	up to 3 Blocks
59013	44"	up to 4 Blocks
59014	53"	up to 5 Blocks
59015	65"	up to 6 Blocks



Slotted Bolt
Part # 59135

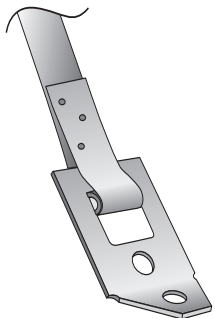


Center Compression Strut

48612 - Single Section, 62" - 108"

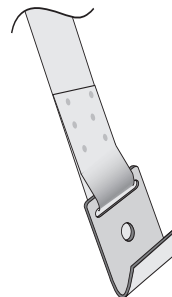
48613 - Double Section, 34" - 60"

Recommend Strap: Depending on local or state requirements



Tie Down Marked & Certified G120 Strap w/Swivel Connector

Part #	Length
59732	12'
59734	14'
59736	16'



Frame Tie w/Hook

8 ft.	P/N 59195
10 ft.	P/N 59210
12 ft.	P/N 59211
Longer Lengths Available	

TIE DOWN ENGINEERING • 5901 Wheaton Drive • Atlanta GA, 30336
www.tiedown.com • (404) 344-0000 • FAX (404) 349-0401

