

# Replacement of Disc Brake

## #46304 Caliper

(January 2013)

### Removing Caliper from Rotor

1. Elevate the trailer using the trailer manufactures instructions. Always use jack stands for support. Do not depend on a jack to support the trailer. Block the trailer wheels to keep trailer from rolling.
2. Remove the tire/wheel assembly. Inspect the rotor surface. Check for excessive wearing or grooves that may affect braking. Please consult owner's manual for minimum rotor thickness.
3. Remove the caliper by unscrewing the slider pins from the mounting bracket (Fig.1). Use a 7/16" socket drive or wrench to remove pins. Be careful to hold caliper in place so that it does not fall and pull on or damage the brake line. Once pins are removed, disconnect brake line and remove caliper from the rotor.

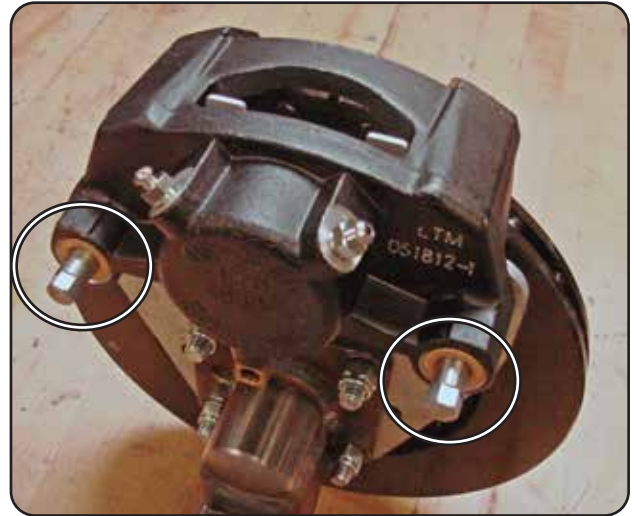


Fig. 1

### Installing New Replacement Caliper

1. Clean threads of slider pins. Apply red thread lock to the threads on the mounting bracket as shown (Fig. 2). **DO NOT REASSEMBLE WITHOUT APPLYING RED THREAD LOCK TO THE THREADS. SLIDER PINS COULD BACK OUT AND CAUSE PERMANENT DAMAGE TO YOUR ROTOR, CALIPER AND TRAILER.**
2. Slide new caliper over rotor and align bushing holes. Insert slider pins and tighten pins to 40 ft. lbs.
3. Reconnect brake line to the caliper. Bleed caliper to remove any air that may be in brake line. Test brakes to be sure that all components are working properly.
4. Reinstall tire/wheel assembly. Torque lug nuts to trailer or wheel manufacturer's specifications. Recheck lug nuts after towing.

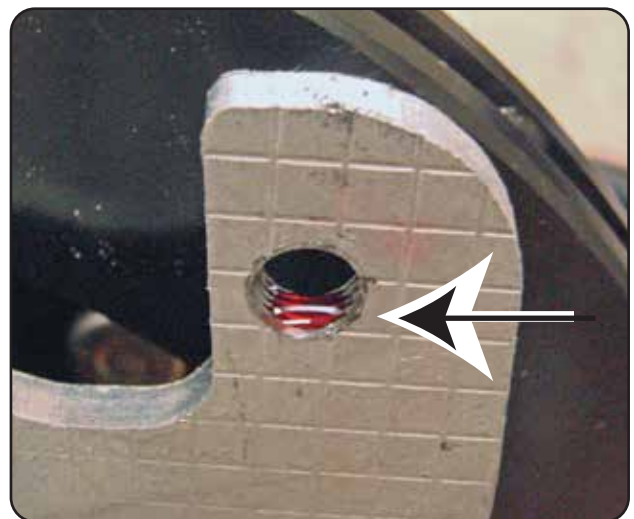
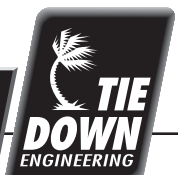


Fig. 2

Reference Sheet #C1282

**TIE DOWN ENGINEERING • 255 Villanova Drive SW • Atlanta, GA 30336**  
**www.tiedown.com (404) 344-0000 Fax (404) 349-0401**



C1282; 062716